

MONTHLY MEMBERSHIP PROGRESS REPORT

LOCATION MINNESOTA

District 5M 11

Results as of: 8/31/2022

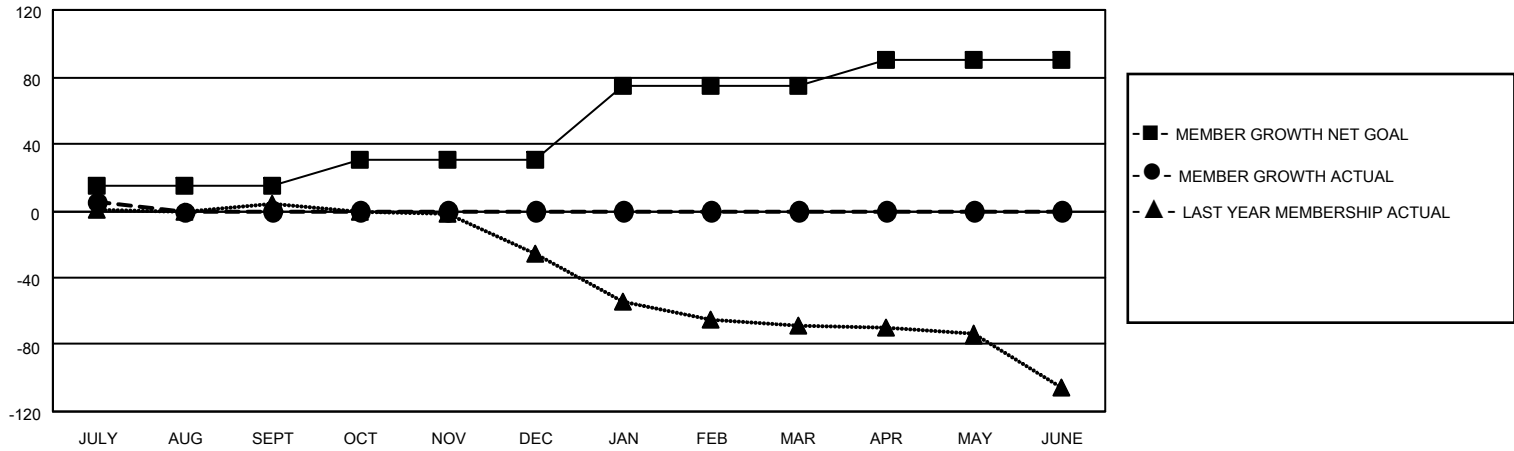
| Clubs | | | |
|-----------------------|---------------|-----------|---------------|
| RESULTS FOR 2022-2023 | | | |
| QUARTER | NEW CLUB GOAL | NEW CLUBS | DROPPED CLUBS |
| JULY/AUG/SEPT | 0 | 0 | 0 |
| OCT/NOV/DEC | 0 | 0 | 0 |
| JAN/FEB/MAR | 1 | 0 | 0 |
| APR/MAY/JUNE | 0 | 0 | 0 |

| Members | | | |
|-----------------------|------------------------|----------------------|---|
| RESULTS FOR 2022-2023 | | | |
| QUARTER | MEMBER GROWTH NET GOAL | MEMBER GROWTH ACTUAL | DROPPED MEMBERS ACTUAL (including transfers) |
| JULY/AUG/SEPT | 15 | 30 | 17 |
| OCT/NOV/DEC | 15 | 0 | 0 |
| JAN/FEB/MAR | 45 | 0 | 0 |
| APR/MAY/JUNE | 15 | 0 | 0 |

GOALS AND ACTUAL NEW CLUBS CUMULATIVE



GOALS AND ACTUAL MEMBERS CUMULATIVE



| | |
|------------------------|-----------|
| DROPPED CLUBS: 0 | |
| <u>DROPPED MEMBERS</u> | |
| DECEASED | 3 |
| CLUB CANCELLED | 0 |
| OTHER | 14 |
| TOTAL | 17 |

7 CLUBS OF 63 ADDED 1 OR MORE NEW MEMBERS

[CLICK HERE FOR CUMULATIVE MEMBERSHIP DATA](#)

| <u>GENDER DISTRIBUTION</u> | |
|---------------------------------|----------------|
| MALE | 1,123 (69.93%) |
| FEMALE | 483 (30.07%) |
| NON BINARY | 0 (0.00%) |
| PREFER NOT TO ANSWER | 0 (0.00%) |
| TOTAL FAMILY UNIT MEMBERS | 330 |
| FAMILY MEMBERS PAYING HALF DUES | 168 |